

Year 13

Induction Meeting

Friday 28 August 2020

MPH - Mr McCann – Principal



Sports Hall - Mrs Savage - VP

Opening Prayer

- We gather today as “fellow-workers in God’s service” (1 Cor. 3.9) after an unprecedented year for our Lasallian Family and all humankind.
- We gather filled with hope for all that is possible in the future and mourn all we have lost.
- We gather to recommit to seeing with the eyes of faith and trusting in God’s providence for the new school year ahead.
- We gather to trust that miracles happen when hearts are touched.
- We gather to celebrate that we are part of that miracle.



The journey so far

- Pupils have been out of school since March
- Remote, online learning characterised the end of Term 2 and the beginning of Term 3
- Engagement was variable for a variety of reasons – Year 12 lack of motivation due to cancelled exams
- We have surveyed our parents and shared a 'lessons learnt' among staff
- The Minister cancelled all exams
- Grades were calculated by schools in early June and submitted to CCEA




20 August 2020- Results Day

- GCSE results were awarded on the basis of Centre Assessed Grades
- A lot of time and effort went into calculating grades
- The situation that had occurred the previous week with AS/A2 exams was not repeated
- There was an overall increase in performance in schools across Northern Ireland and the UK
- Higher numbers of pupils were looking for places in schools
- We experienced a sharp increase on two fronts:
 - The number of our own students looking to return
 - The number of students looking to join from other schools



Subject content for 2020-21

- CCEA and other ABs have been asked by school leaders to consider the volume of content to be covered in 2020-21
 - They have also been asked to consider the methods of assessment and look at the structure and format of examination papers
 - CCEA launched a consultation this week
 - Our curriculum leaders are pressing ABs to resolve these issues before teaching commences full time
 - We will keep you informed of developments and outcomes
- 

Moving forward...

- Students have been out of the school **environment** and **routine** for 5 months
- Our aim is a **safe** return to school for everyone on 3 September after inductions for all year groups
- We want to share our plans with you and communicate how we expect to manage the term ahead, mindful that the situation is fast-changing
- Ask for your support as we move forward – community effort
- Outline our commitment to and expectations for our Year 8 students beginning their Red High journey in these uncertain times



Getting the school ready

- Assessments have been carried out
- Controls put in place to minimise risks to young people and adults in the school each day
- Measures put in place to manage the school day that will promote our safe return
- Changes to how we typically do things
- An evolving process based on advice and instruction from the Minister, DE and EA

The New School Day



Safety briefing and
new arrangements for
a safe return for all



Three Guiding Principles



Safety of all
pupils

Safety of all
staff

Increasing
separation and
decreasing
Interaction

Our aims moving forward



- To take all reasonable and practical measures to reduce/prevent the possibility of infection of SPGS family and wider community
- To contribute to the prevention/reduction of any potential spread of the Covid-19 virus
- To adhere to guidance from HSENI, PHA and NI Executive
- To facilitate a safe return to school and deliver the curriculum while following Health and Safety guidance.



Overview: Safety of Pupils

- New school timetable to minimise pupil interaction
- Bubbles for Years 8-10 – localised
- Supervised demarcated play areas for year groups
- Designated entry and exit points - sanitiser available
- **Seating plans for Track and Trace in all classrooms**
- Face coverings *not required* in lessons but **strongly recommended** that they are worn outside of lessons
- Ministerial guidance with effect from 31 August

Restricting Interaction/Limiting Movement

- KS 3 pupils: teachers will move to 'bubble' rooms to teach Year 8-10 all subjects – except PE.
- All pupils will wear PE kit on days where PE is timetabled instead of uniform
- Years 11- 14 will move to classes as normal (as possible)
- One-way system will be in operation to avoid corridor congestion
- Clockwise downstairs - anti clockwise upstairs - using the courtyard as part of the one-way system – signage in place

Your Classroom

- Seating Plan: all pupils facing forward – ICT specific requirements
- 2 metre social distancing between teacher and pupils
- Rooms ventilated by opening windows and doors
- Perspex screen on teacher desk
- Toilets cleaned after breaks and lunches in addition to enhanced regime
- Pupils will be requested to wipe down desks at the end of session using wipes provided and place chair on desk if last class of the day
- Time given to allow for sanitising of hands/mask before leaving room.

Contact Tracing: Pupil Safety



No pupil will be sent on an errand to another teacher's room



No pupil will be allowed out of class/study to 'go and see' or 'speak with' any member of staff



No pupil will be allowed out of class to print, photocopy, ask for printing credits or 'see the IT technician for printing credits'




Art/Technology/Drama/Music will keep records if Sixth Form Pupils are working in areas in study periods



Pupils will sit facing in the one direction and a seating plan will be strictly adhered to.

Your Resources

- Pupils will be encouraged to bring the bare minimum of books to and from home - subject teachers will advise
- Bring all necessary stationery - no sharing of equipment is allowed
- Personal ICT equipment can be brought from home- pupil responsibility
- Practical work – initially through demonstration - follow relevant PHA advice
- Microsoft Teams - remote learning will be incorporated into face to face teaching



Working together: How you, as a pupil, can help.

- We are all responsible for our personal hygiene - frequent handwashing
- Practice social distancing as much as possible – including the school journey
- Wear a face covering moving around the school and follow the one way system
- Make regular use of the hand sanitising stations throughout the school and use your personal sanitiser particularly if using any equipment, wipe down workstations
- Follow the 'catch it, bin it, kill it' strategy if sneezing and coughing



DE Guidance

Covid-19 Related Behavioural Incidents

Schools should make provision to sanction, up to and including exclusion, pupils who wilfully refuse to adhere to arrangements of social distancing and deliberately cough or spit at pupils or staff, putting them at risk.



How you, as a parent, can help

- Keep your child at home if he/she is displaying any of the recognised symptoms
- Inform us if your child is 'clinically vulnerable' or someone in the household
- Inform us if you change your contact details
- Ensure your child has personal sanitising gel and all necessary stationery
- Have arrangements in place to collect your child if contacted by school reception
- Inform school reception if anyone in your household tests positive

New School Day

No after school activities until further notice – including sport and study facilities

All pupils must leave the school grounds immediately at the end of the school day to allow for enhanced cleaning

No access to school building after 3.30pm

Home School Transport

School buses

- Mandatory for those over 13 years but 'strongly recommended for all pupils' to wear a face covering (a plastic bag to be used to store covering during the school day)
- Social distancing on dedicated school transport is not required
- Face coverings will be worn by teachers on bus duty.



Bringing Cars to School

- Principles of our existing policy still remain - student car park only
- Permission Form from Reception and returned to Mr Morgan
- Students may take cars to reduce numbers on public transport and may bring younger siblings for the same reason
- For Trace, Track and Protect purposes pupils will be asked to name the car occupants on the Permission Form – car pool arrangements
- No 'ad hoc' passengers at end of school day.

Year 13 Day

Staggered Break
and lunch

Year 13 will study in
the back of the MPH
- set seat

Both Year groups will
study at home
during Wednesday
Enrichment for the
foreseeable future.

Year 13 can study at
home if they have
no class periods 9-11
Kept under review

Registration	9.00am- 9.15am
Period 1	9.15am - 9.50am
Period 2	9.50am- 10.20am
Period 3	10.20am-10.50am
Period 4	10.50am-11.20am
Break	11.20am - 11.35am
Period 5	11.35am- 12.05pm
Period 6	12.05pm - 12.40pm
Period 7	12.40pm - 1.15pm
Lunch	1.15pm -1.50pm
Period 9	1.50pm - 2.20pm
Period 10	2.20pm -2.50pm
Period 11	2.50pm- 3.20pm

Year 13: Your School Day

- On arrival, use the sanitiser at your entrance - Main Reception Doors
- Wear your mask - Follow the one way system
- Wash hands - sink in your Form Room/or in bathroom - repeat throughout the day
- Sit in your assigned seat - if not facing forward, keep 2 metres apart
- Period 3 now begins at 10.50am
- Break is 11.20am
- Take care of your ICT device

Your School Day

- Year 13 are not permitted to leave the building at lunchtime if they have lessons in the afternoon – this is a Year 14 privilege
- Cars cannot be taken from the car park at lunchtime
- Year 13 who have no timetabled class periods 9-11, may go **home** at lunchtime
- **THIS DOES NOT MEAN HANGING AROUND DOWNPATRICK!**
- Supervised study facilities are available each day until 3.20pm.




Catering arrangements

- The school canteen service, delivered by Autograph, will be operational with a reduced range of options.
- Every day there will be a meal of the day (variations will not be possible) as well as a vegetarian option and a selection of pre-packed sandwiches and other options. A full risk assessment of the canteen has been completed, with a range of control measures being implemented including:
 - The canteen area will be set up as normal in the Miguel Centre each day to ensure social distancing
 - Hand-sanitising stations will be placed at the entrance to the serving area.

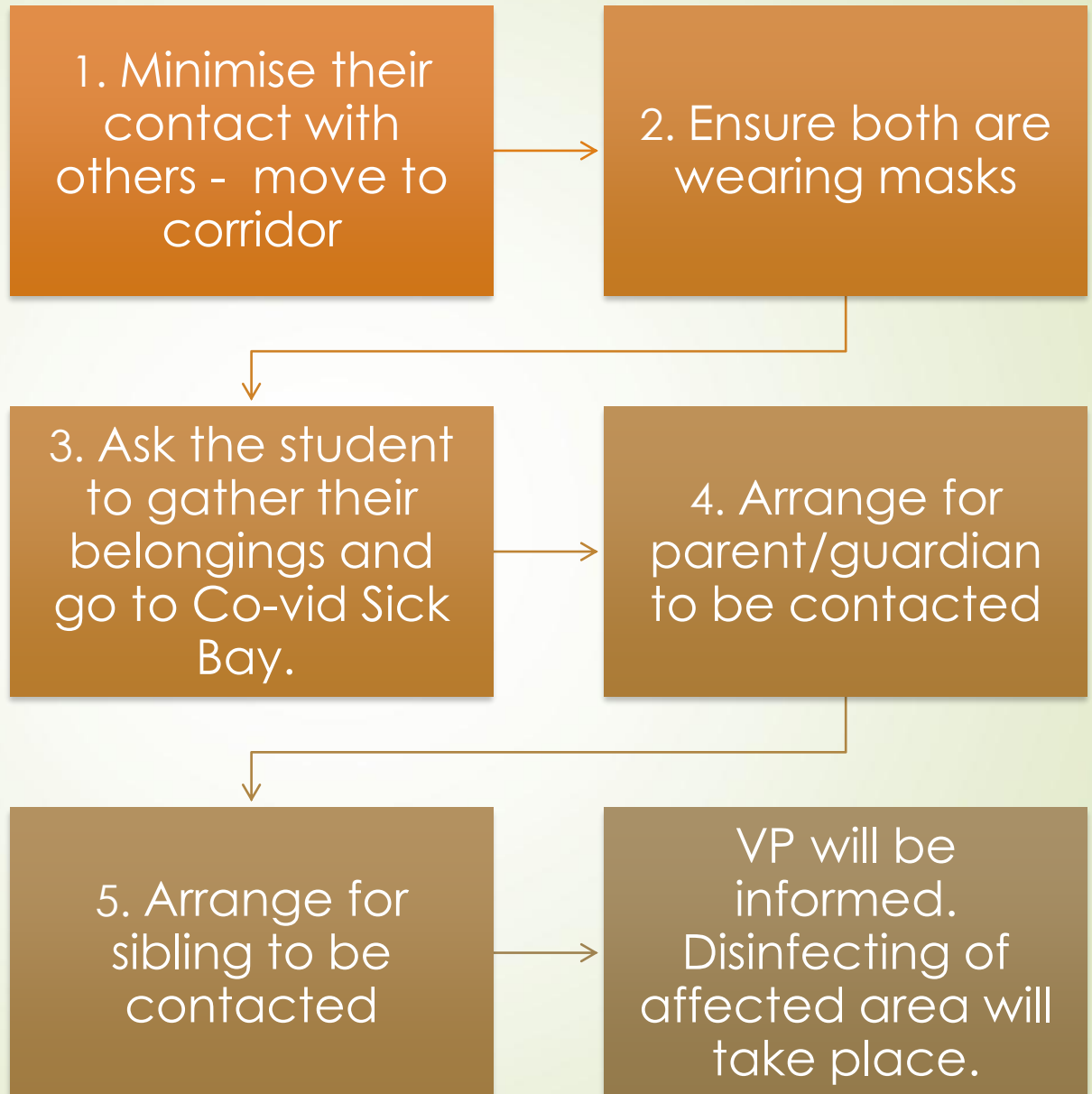


Catering arrangements

- Screens have been fitted at cash tills and the current bio-metric / PIN system for payment will continue to operate with enhanced sanitizing measures.
- All food will be served in line with current guidance to schools i.e. disposable crockery / cutlery.
- Tables and chairs will be cleaned down after use with anti-bacterial cleaning products.
- Pupils will remain within their bubbles/year groups during lunch/break times and mixing between groups will be avoided as far as is reasonably practicable



What will a teacher do if a student says they have a Co-vid symptom?





What if my child develops Co-vid symptoms in school?

- Reception staff will contact the parent immediately to come and collect - also sibling
- Student will be taken to Co-vid Sick Bay and supervised by staff member wearing PPE
- Window in room will be opened to ensure ventilation
- Follow the NIE 'Test, Trace and Protect' strategy, keeping student and household members at home for 48 hours after a negative test result.
- Confirm test and result with Mrs Savage before pupil (and household members) can return.
- School will contact EA for most up to date advice r isolation measures/possible school closure.



The Contact Tracing Service in the PHA will contact the teacher about recent movements

People with whom the teacher has been in direct contact, or been within 2ms for more than 15 minutes

Passing in corridors does not therefore present a significant risk to staff or pupils


All household members must follow PHA isolation guidance

Cover arrangements will be made

A
member
of staff
tests
positive

PHA Isolation Guidance

- If a pupil tests positive, provide a dated 'Isolation Note' to the school
- Pupil will need to stay at home **for at least 10 days;**
- If you live with someone who has symptoms or a positive test, you will need to **stay at home for 14 days from the day the first person in the home started having symptoms;**
- If you develop symptoms during this 14-day period, you will need to self-check in accordance with Test and Trace guidance and stay at home **for 10 days from the day your symptoms started** (regardless of what day you are on in the original 14-day period);



Communication of a Positive Case

- Please inform us as soon as possible- if a teacher tests positive we will inform you as soon as possible
- Enhanced cleaning will be carried out within any classroom in which an individual who has developed COVID-19 has been to minimise risk of the spread of the virus
- This will be clearly communicated to staff, parents and pupils to provide assurance that the environment is safe

Face Coverings Guidance

- PHA recommends face coverings are used in particular circumstances: short periods in enclosed spaces where social distancing is not possible
- As face coverings are mainly used to protect others, not the wearer, from Coronavirus (Covid-19) they **are not** a replacement for social distancing and regular hand washing
- Given the risk mitigations in place in schools, face coverings are recommended but not mandatory for routine use
- Please be aware that some individuals are exempt from wearing face coverings.

SPGS Face Coverings


- *'face coverings are not generally recommended for routine use in schools. Staff and pupils may wish to use them during the routine school day and this is acceptable...some persons are exempt from wearing face coverings'*

(DENI Reopening Schools 'New School Day' 13 August 2020)

- Public transport - mandatory 13 +
- SPGS recommend for all pupils
- All adults visiting the school - SPGS appointment only - please do not arrive without an appointment
- SPGS - recommends face coverings for staff in corridors and for all pupils



New School Day: Blended Learning


- ***An approach to education whereby schools will combine classroom based teaching and learning methods within school, with a range of remote learning in order to deliver the Northern Ireland curriculum.***
- 

Blended Learning and ICT

- From Thursday 3 September, students will experience a mixture of class and online learning and teaching. (Microsoft Teams).
- Successful online learning requires self-motivation and discipline and develops many transferrable skills.
- Resources and homework will be posted by teacher online.
- Students will be required to communicate with teachers online and return homework assignments and coursework for marking.
- Students should use OneDrive for storage of materials rather than memory pens/hard drives.



Embracing Year 13

- Be in school every day
 - Return with a positive attitude that will be infectious
 - Work hard from day 1 as we do not know what lies ahead
 - Do not fall behind with homework assignments
 - Work hard at AS past papers as directed by your teachers
 - Be an active role model to our younger students – lead by a positive example
 - Look after yourself outside of school
- 



Support outside of school

- Counselling Services, provided by Familyworks are available this week - contact the school or Familyworks on 028 9182 0341.
- Counselling delivered by school counsellor Rachel Johnston will be delivered remotely until week beginning 7 September when face to face counselling in school will resume.
- Outside school hours in case of emergency please contact Lifeline 0808 808 800.

School Gateway



- Home – School Communication App
 - all school related communication, reports, timetables, attendance figures and payments will go through the School Gateway from the beginning of the 2020/21 academic year.
- App can be downloaded from App Store (Apple) or Play Store (Android)
- To register, we must have an email and mobile phone number on our school information system.
- For registration details and troubleshooting, visit the Parents tab of the school website (www.spgs.org.uk) – pupils joining SPGS will complete a data capture form next week – primary mobile and email required.

EMA

EDUCATION MAINTENANCE
ALLOWANCE (EMA)

Application Notes

**Academic year
2020/21**

www.nidirect.gov.uk



- **The Money to Learn Education Maintenance Allowance known as EMA, is a payment of £30 per week, paid fortnightly straight into your bank account.**
- **Who can get EMA?**
 - £20,500 or less, and you're the only young person; or
 - £22,500 or less, and there's more than one young person who qualifies for Child Benefit in the household;
 - you have not already received the maximum allowance for the EMA scheme; and •
 - you're aged 16, 17, 18 or 19 on or between 2 July 2019 and 1 July 2020.
- **EMA Learning Agreement - attendance, performance and behaviour**
 - two bonus payments of £100 paid in January and June



And finally...

- You have made the first step back to school
 - Enjoy the Bank Holiday weekend
 - We look forward to welcoming the entire school community back on Thursday 3 September
 - **Those joining us for the first time should go to the MPH for 9am on this date.**
 - **STAY SAFE**
- 